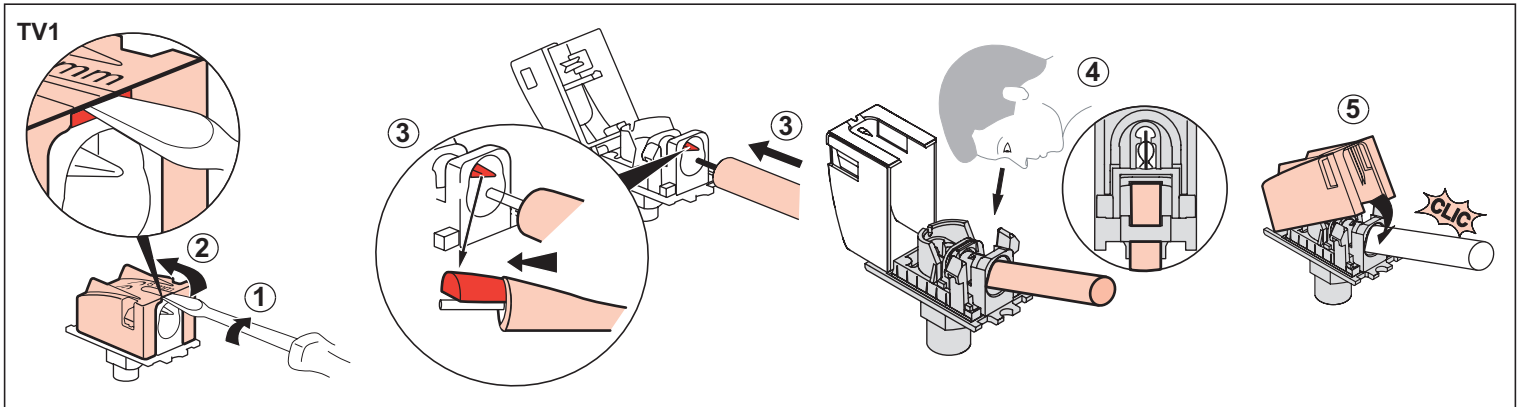
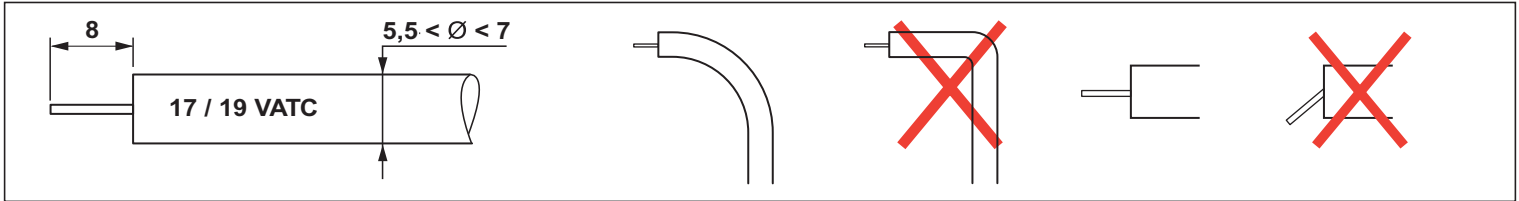


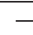





 TV1	Coax	Attenuation 		Control	Return path	Channel 1	Channel FM	Channel VHF	Channel UHF	Channel SAT
	Z = 75 Ω		500 mA							
		dB	mA	KHz / V	MHz	MHz	MHz	MHz	MHz	MHz
		i < 1,5 dB								



	Coax	Attenuation		Control	Return Path	Channel 1	Channel FM	Channel VHF	Channel UHF	Channel SAT
	Z = 75 Ω		500 mA							
				22 / 0,6	4 – 30	47 – 68	87,5 – 108	120 – 470	470 – 862	950 – 2150
		dB	mA	KHz / V	MHz	MHz	MHz	MHz	MHz	MHz
<b>TV2</b>	 TV	 < dB								
<b>TV3</b>		 < dB								
		<b>i</b> = 10 dB								
		<b>i</b> = 14 dB								

